



ASY Electronics (Jiaxing) Co., Ltd

Business inquiries: +86 181 5734 3325

E-mail: sales@king-sen.com Website: www.asyjx.com

Address: Room 302, Building 11, No. 79 Jinsui Road, Economic and Technological Development Zone, Jiaxing , Zhejiang P.R. China

Wireless tilt sensor KL-QJ36GL Manual





ASY Electronics (Jiaxing) Co., Ltd

Business inquiries: +86 181 5734 3325

E-mail: sales@king-sen.com Website: www.asyjx.com

Address: Room 302, Building 11, No. 79 Jinsui Road, Economic and Technological Development Zone, Jiaxing , Zhejiang P.R. China

Table of contents

I. Product overview	1
II. Main technical parameters	2-2
III. Product instructions for use	3-4
3.1 Installation precautions	3
3.2 Installation diagram	4
3.3 Precautions	4
IV. Typical networking methods for	
5.....	5
V. External dimensions	6
VI. Contact us	7



ASY Electronics (Jiaxing) Co., Ltd

Business inquiries: +86 181 5734 3325

E-mail: sales@king-sen.com Website: www.asyjx.com

Address: Room 302, Building 11, No. 79 Jinsui Road, Economic and Technological Development Zone, Jiaxing , Zhejiang P.R. China

I、 Product Overview

In building construction or road paving, leveling and calibrating engineering machinery is often required, and one of the most common problems encountered is measuring horizontality and tilt. Therefore, our company has independently developed this wireless tilt sensor KL-QJ36GL, which is widely used in industrial tilt measurement and is an ideal choice for industrial automation control and platform angle measurement.

The KL-QJ36GL wireless tilt sensor transmits data wirelessly and can be connected to our company's independently developed wireless monitoring system, which uses radio waves for signal transmission. The sensor is installed on the device and connects to the receiving host via a wireless network, enabling real-time online monitoring of the temperature and tilt angle data of the object being measured .



II、 Main technical parameters

Category	Parameter indicators
X-axis range is	-180°~180°
Y-axis range is	-180°~180°
Measurement accuracy	0.1°
Operating voltage	2.5~3.6V
Standby current	1uA
Carrier frequency	433MHz
RF modulation mode	GFSK
Wireless transmission distance	≤300 meters (visible distance in open areas)
Transmission frequency	1 time/1 min
Product dimensions	57.7*89.5*35.5 (mm)
Work environment	Temperature: -20°C to +85°C Humidity: ≤90%RH
Storage environment	Temperature: -45°C to +90°C Humidity: ≤95%RH
Waterproof rating	IP65



ASY Electronics (Jiaxing) Co., Ltd

Business inquiries: +86 181 5734 3325

E-mail: sales@king-sen.com Website: www.asyjx.com

Address: Room 302, Building 11, No. 79 Jinsui Road, Economic and Technological Development Zone, Jiaxing , Zhejiang P.R. China

III、 Product user manual

3.1 Installation precautions

1. This product has a built-in battery and sends data every minute, including X-axis and Y-axis angle data and battery voltage;

2. Configure the corresponding address on the host (refer to the corresponding host manual for configuration methods). The host receives data and displays the temperature and voltage values.

3. Please install the tilt sensor according to the correct installation method. Incorrect installation will lead to measurement errors. Pay special attention to the two "surfaces" and two "lines".

(1) The mounting surface of the sensor must be fixed tightly, flat and stable to the surface being measured. If the mounting surface is uneven, it will easily cause the sensor to measure the angle error.

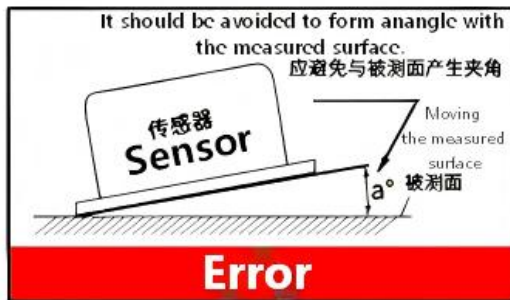
(2) The sensor axis and the measured axis must be parallel, and the two axes should not form an angle as much as possible.

(3) Place the device upright on the table, with the X-axis pointing to the right and the Y-axis pointing upwards. The direction of rotation is defined by the right-hand rule, that is, the direction of rotation around the X-axis is the direction of the right thumb pointing towards the X-axis and the direction of the four fingers bending. The X-axis angle is the direction of rotation around the X-axis, and the Y-axis angle is the angle of rotation around the Y-axis.

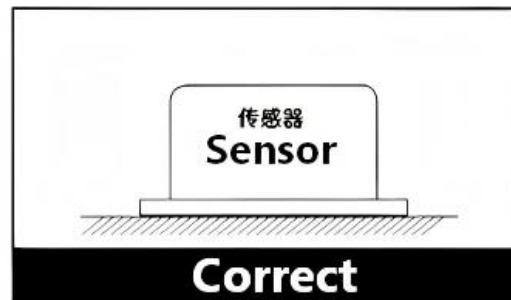


3.2 Installation diagram

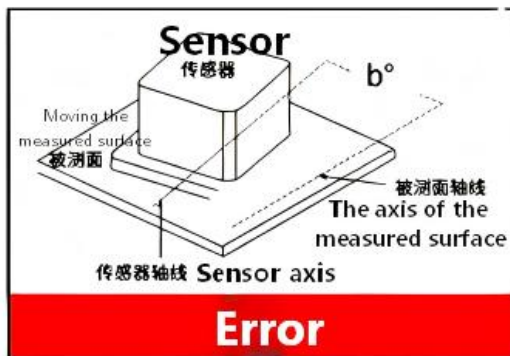
Installation instruction



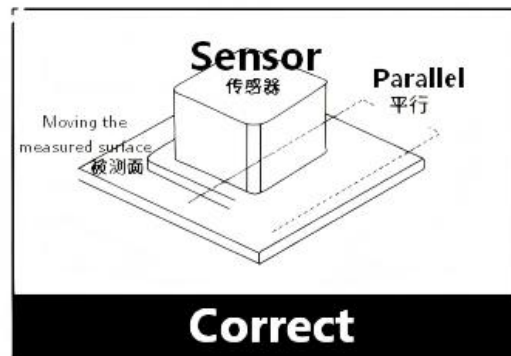
Pic 1



Pic 2



Pic 3



Pic 4

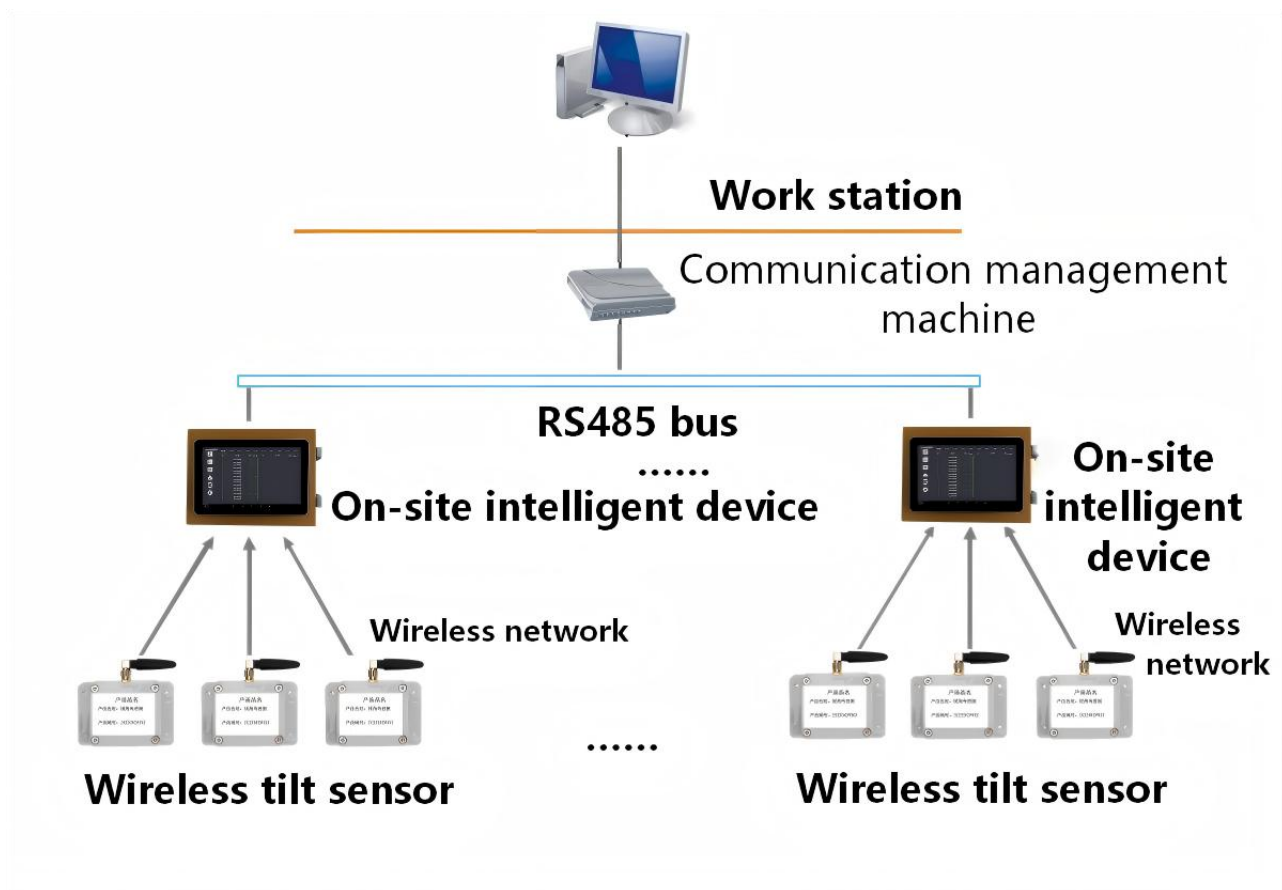
3.3 Precautions

1. Do not disassemble or repair this item yourself; please contact your local supplier.
2. Do not use chemical cleaners;
3. Do not use within the scope of medical devices;
4. Do not use on airplanes;
5. Do not use in any flammable or explosive environment;
6. Please read this manual carefully before use and ensure that it is used in a safe environment;





IV、 wireless temperature measurement systems



Note: This diagram shows a typical network topology, which may vary depending on the specific project requirements.



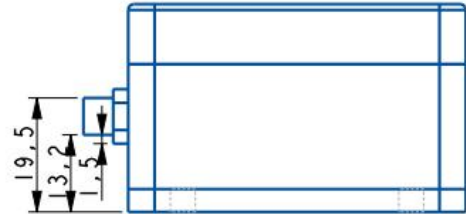
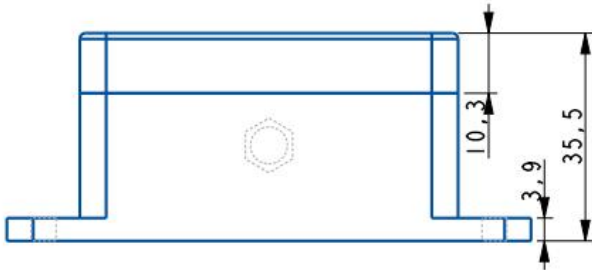
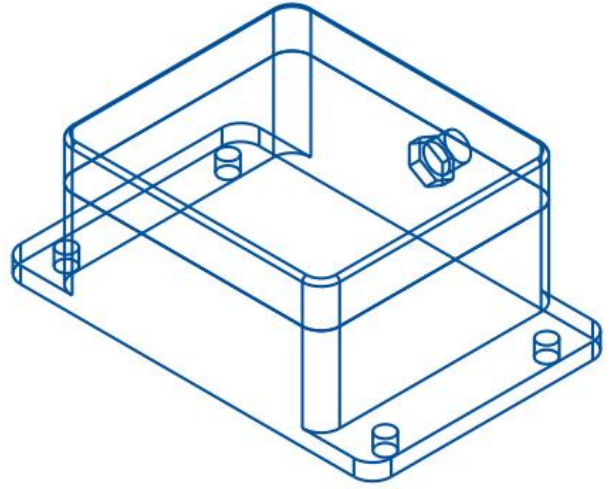
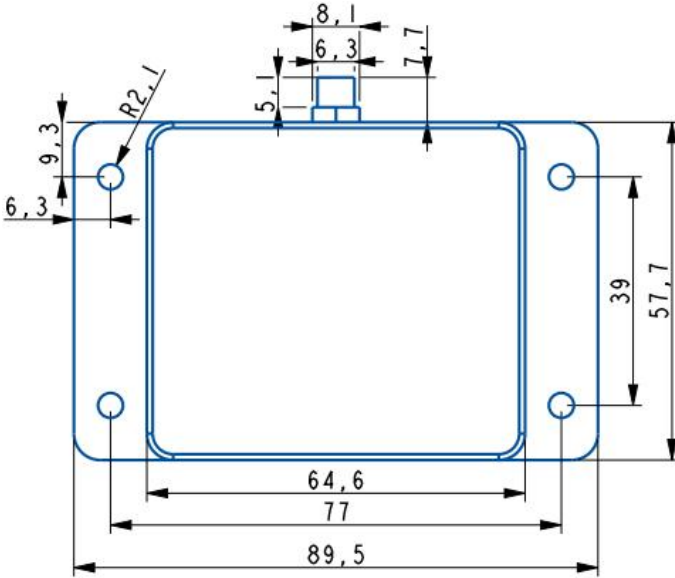
Business inquiries: +86 181 5734 3325

E-mail: sales@king-sen.com Website: www.asyjx.com

Address: Room 302, Building 11, No. 79 Jinsui Road, Economic and Technological Development Zone, Jiaxing , Zhejiang P.R. China

V、 External dimensions

External dimensions (unit: mm)





ASY Electronics (Jiaxing) Co., Ltd

Business inquiries: +86 181 5734 3325

E-mail: sales@king-sen.com Website: www.asyjx.com

Address: Room 302, Building 11, No. 79 Jinsui Road, Economic and Technological Development Zone, Jiaxing , Zhejiang P.R. China

VI、 Contact Us



Business Phone: 18157343325 Lila Xu

Technical Phone: 18057302496 Wailly Yang

E-mail: sales@king-sen.com

Office website: www.asyjx.com

Address: Room 302, Building 11, No. 79 Jinsui Road,
Economic and Technological Development Zone,
Jiaxing , Zhejiang P.R. China

*This information product images and technical data is for reference only, if subject to update without prior notice, the specific content of the right to interpret ASY Electronics (Jiaxing) Co., Ltd.